

Hastings' Campus Crime Statistics

The following are reported in compliance with the Jeanne Clery Disclosure of Security Policy and Campus Crime Statistic Act for calendar years 2011, 2012, and 2013. Statistics in the "campus" column represent incidents reported in the administration and classroom buildings, at 198 and 200 McAllister Street, as well as the parking garage used by students, employees, faculty, and the general public, at 376 Larkin Street; statistics in the "public" column represent incidents reported within 600 feet of the 200 McAllister building or in designated "contiguous areas" to the campus; statistics in the "housing" column represent incidents reported at the 100 McAllister ("Tower") building. The data combine reports received by the Public Safety Department, Campus Security Authorities, S.F.P.D., and other key areas. While every effort was made to avoid duplication of data, it is still possible that an incident may have unintentionally been counted more than once. It should further be noted that, while U.C. Hastings is located in the Tenderloin neighborhood of San Francisco, an area that is known for its high incidence of property crimes, those statistics are not included for Clery purposes.

Crime	2012			2013			2014			Totals		
	Campus	Public	Housing	Campus	Public	Housing	Campus	Public	Housing	'12	'13	'14
Homicide (Non-Negligent Manslaughter)	0	0	0	0	0	0	0	0	0	0	0	0
Negligent Manslaughter	0	0	0	0	0	0	0	0	0	0	0	0
Forcible Sex Offense	0	1	0	1	3	0	0	1	0	1	4	1
Non-Forcible Sex Offense	0	0	0	0	0	0	0	0	0	0	0	0
Robbery	2	20	0	2	31	0	0	17	0	22	33	17
Aggravated Assault	0	8	0	0	13	0	0	29	0	8	13	29
Burglary	5	0	0	3	0	0	0	0	0	5	3	0
Arson	0	0	0	0	0	0	0	0	0	0	0	0
Auto Theft	0	3	0	0	13	0	0	5	0	3	13	5
Truck/Bus Theft	0	2	0	0	0	0	0	0	0	2	0	0
Other Vehicle Theft	0	0	0	0	2	0	0	0	0	0	2	0
Total Motor Vehicle Theft	0	5	0	0	15	0	0	0	0	5	15	0

Statistics are separately gathered for hate crimes falling under each of the categories above. There were no hate crimes reported for 2012, 2013, and 2014.

Newly-Added Reporting Categories: The following categories were added by the Campus Sexual Violence Elimination Act (VAWA), in March 7, 2013. *See also* the Hastings Policy on Discrimination, Protected-Status Harassment, Sexual Harassment, and Sexual Assault and Violence Related to Students (available online and at various campus locations).

Dating Violence	--	--	--	0	0	0	0	1	0	--	0	1
Domestic Violence	--	--	--	0	2	0	0	0	0	--	2	0
Stalking	--	--	--	1	0	0	0	0	0	--	1	0
Forcible Fondling	--	--	--	0	0	0	0	1	0	--	0	1

The San Francisco Police Department was unable to provide public crime data for stalking, dating violence, and domestic violence that occurred within 600 feet of the 200 McAllister building or in designated "contiguous areas" to the campus for the year 2013.

Referrals/Arrests for Selected Offenses:

Offense Type	2012			2013			2014			Totals		
	Campus	Public	Housing	Campus	Public	Housing	Campus	Public	Housing	'12	'13	'14
DWI Arrests	0	0	0	0	0	0	0	0	0	0	0	0
Alcohol Offense: Referral	0	0	0	0	0	0	0	0	0	0	0	0
Alcohol Offense: Arrest	0	0	0	0	1	0	0	2	0	0	1	2
Drug Offense: Referral	0	0	0	0	0	0	0	0	0	0	0	0
Drug Offense: Arrest	1	85	0	0	72	0	0	68	0	86	72	68
Weapons Possession: Referral	0	0	0	0	0	0	0	3	0	0	0	3
Weapons Possession: Arrest	0	4	0	0	5	0	0	0	0	4	5	0

Definitions for Statistical Purposes:

Aggravated Assault: An unlawful attack by one person upon another for the purpose of inflicting severe or aggravated bodily injury. This type of assault usually is accompanied by the use of a weapon or by means likely to produce death or great bodily harm. (It is not necessary that injury result from an aggravated assault when a gun, knife, or other weapon is used which could and probably would result in serious personal injury if the crime were successfully completed.)

Arson: Any willful or malicious burning or attempt to burn, with or without intent to defraud, a dwelling house, public building, motor vehicle or aircraft, personal property of another, etc.

Burglary: The unlawful entry of a structure to commit a felony or a theft. For reporting purposes this definition includes: unlawful entry with intent to commit a larceny or felony; breaking and entering with intent to commit a larceny; housebreaking; safecracking; and all attempts to commit any of the aforementioned.

Criminal Homicide – Manslaughter by Negligence: The killing of another person through gross negligence.

Criminal Homicide – Murder and Non-Negligent Manslaughter: The willful (non-negligent) killing of one human being by another.

Dating Violence (Intimate Partner Violence): The term “dating violence” or “intimate partner violence” describes violence committed by a person (A) who is or has been in a social relationship of a romantic or intimate nature with the victim; and (B) where the existence of such a relationship shall be determined based on a consideration of the following factors: (i) The length of the relationship. (ii) The type of relationship. (iii) The frequency of interaction between the persons involved in the relationship.

Domestic Violence: The term “domestic violence” includes felony or misdemeanor crimes of violence committed by a current or former spouse or intimate partner of the victim, by a person with whom the victim shares a child in common, by a person who is cohabitating with or has cohabitated with the victim as a spouse or intimate partner, by a person similarly situated to a spouse of the victim under the domestic or family violence laws of the jurisdiction receiving grant monies, or by any other person against an adult or youth victim who is protected from that person’s acts under the domestic or family violence laws of the jurisdiction.

Drug Abuse Violations: The violation of laws prohibiting the production, distribution and/or use of certain controlled substances and the equipment or devices utilized in their preparation and/or use. The unlawful cultivation, manufacture, distribution, sale, purchase, use, possession, transportation or importation of any controlled drug or narcotic substance. Arrests for violations of state and local laws, specifically those relating to the unlawful possession, sale, use, growing, manufacturing and making of narcotic drugs. The relevant substances include: opium or cocaine and their derivatives (morphine, heroine, codeine); marijuana; synthetic narcotics – manufactured narcotics which can cause true addiction (Demerol, methadone); and dangerous nonnarcotic drugs (barbiturates, Benzadrine).

Hate Crime: A variety of specified offenses, as defined by the California Civil and Penal Code, in which: (a) the person against whom the offense is committed or intended to be committed is selected in whole or in substantial part because of his/her race, color, religion, ancestry, national origin, political affiliation, sex, sexual orientation, age or disability or position in a labor dispute, or because a person is perceived to have one or more of these characteristics, regardless of whether the belief or perception is correct; or (b) the act(s) constituting the offense is/are committed in whole or in substantial part on the basis of a belief or perception regarding the race, color, religion, ancestry, national origin, political affiliation, sex, sexual orientation,

age or disability or position in a labor dispute, regardless of whether the belief or perception is correct.

Liquor Law Violations: The violation of laws or ordinances prohibiting: the manufacture, sale, transporting, furnishing, possessing of intoxicating liquor; maintaining unlawful drinking places; bootlegging; operating a still; furnishing liquor to a minor or intemperate person; using a vehicle for illegal transportation of liquor; drinking on a train or public conveyance; and all attempts to commit any of the aforementioned. (Drunkenness and driving under the influence are not included in this definition.)

Motor Vehicle Theft: The theft or attempted theft of a motor vehicle. There are three classes of motor vehicles: (1) autos, (2) trucks and buses, (3) and other vehicles. (All cases where automobiles are taken by persons not having lawful access even though the vehicles are later abandoned—including joyriding—are classified as motor vehicle theft.)

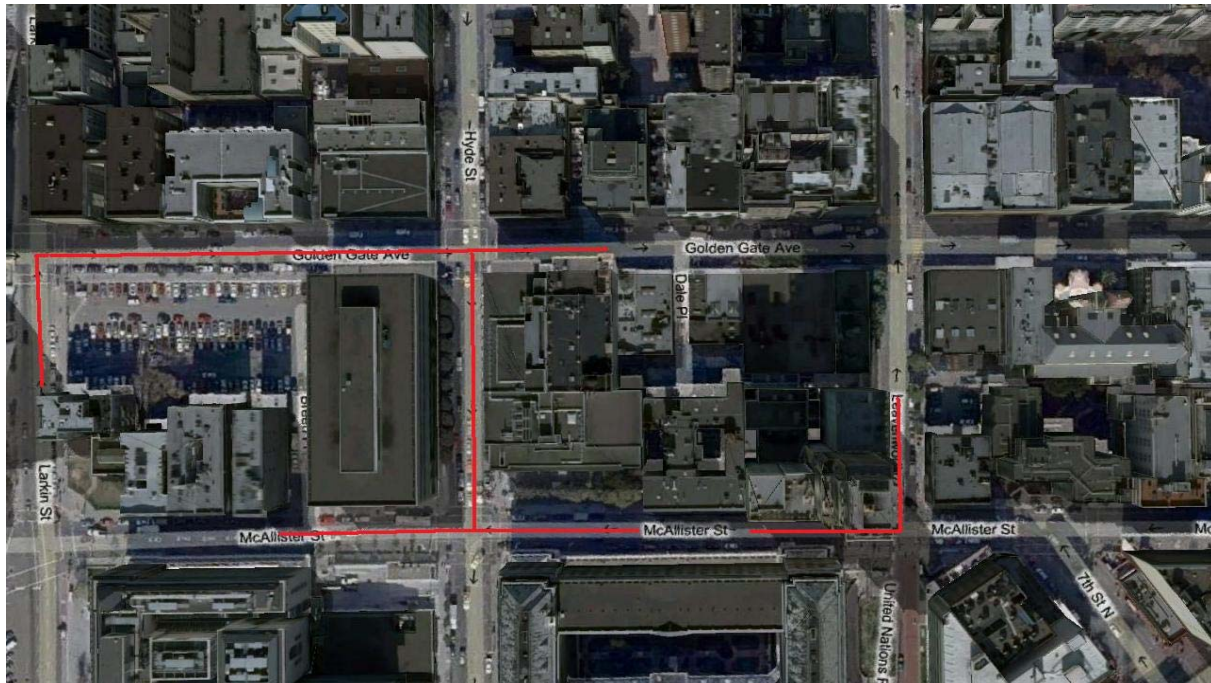
Robbery: The taking or attempting to take anything of value from the care, custody, or control of a person or persons by force or threat of force, or violence and/or by putting the victim in fear.

Sex Offenses – Forcible: Any sexual act directed against another person, forcibly and/or against that person's will; or not forcibly or against the person's will where the victim is incapable of giving consent because of his/her temporary or permanent mental or physical incapacity.

Sex Offenses – Non-Forcible: Any sexual act directed against another person who is incapable of giving consent. (A) Incest – Non-forcible sexual intercourse between persons who are related to each other within the degrees wherein marriage is prohibited by law. (B) Statutory Rape—Non-forcible sexual intercourse with a person who is under the statutory age of consent.

Stalking: Stalking describes a course of conduct directed at a specific person that would cause a reasonable person to: (1) fear for his/her safety or the safety of others; or, (2) suffer substantial emotional distress.

Weapon Law Violations: The violation of laws or ordinances dealing with weapon offenses, regulatory in nature, such as manufacture, sale, or possession of deadly weapons; carrying deadly weapons, concealed or openly; furnishing deadly weapons to minors; aliens possessing deadly weapons; and all attempts to commit any of the aforementioned.



Statistical Reporting Area: The Clery Act has refined its definition of contiguous public areas, and now requires that campuses report only crimes that occur on public sidewalks adjacent to university property, and on the street and the sidewalk across the street from campus buildings. The Hastings Public Safety Department has been reporting in accordance with this definition since 2007. The outlined reporting area includes street addresses: 0-54 Leavenworth Street, 100-254 McAllister Street, 50-100 Hyde Street, 280-400 Golden Gate Avenue, and 376-400 Larkin Street. Intersections of: McAllister and Leavenworth Streets, Hyde and McAllister Streets, Larkin and Golden Gate Avenue, and Hyde and Golden Gate Avenue. The crime statistics for a larger contiguous area is also reported monthly by the San Francisco Police Department as Plot area J-555, available online at www.sfgov.org.

Annual Fire Safety Report

The Higher Education Opportunity Act (Public Law 110-315, 2008) requires that all academic institutions produce an annual fire safety report outlining safety practices, standards, and all fire-related statistics pertaining to on-campus residential buildings. This Annual Fire Safety Report is produced in compliance with that act and includes fire statistics for each on-campus student housing facility, including fire systems and drills conducted. The report also includes institutional policies and rules concerning fire safety, such as procedures for student housing evacuation.

Fire Systems: The on-campus housing facility, or “Tower,” at 100 McAllister Street, is equipped with full fire sprinkler system (wet standpipe) and automatic fire alarm system that is wired into an off-site dispatch center, where staff are available to respond 24 hours a day, 7 days a week, and into the local building Fire Control Center (FCC). There are approximately 250 apartment units in the Tower, and all contain smoke detectors.

Fire Evacuation Drills: Fire evacuation drills are scheduled annually in campus buildings. Fire evacuation drills were last conducted on October 2nd, 2014.

On-Campus Housing Fire and Safety Regulations: Every resident of the Tower is strictly required to adhere to rules prohibiting all flammable substances and chemicals; candles, including decorative and functional, wick or no wick; all substances that emit offensive odors, are toxic, corrosive, or explosive in nature; ammunition, fireworks, gasoline, illegal weapons, and illegal drugs; and, hot plates or any appliance with an open-heating element. As a state building, smoking is prohibited in the Tower.

Fire Safety Education: A “flip chart” is distributed to all students, staff, and employees detailing emergency-response protocols, including those for fire emergencies. Annual fire-extinguisher training is also offered to authorized personnel (floor wardens) and staff members.

Fire-Reporting Protocol: Fire incidents should first be reported to 911. Then, to: the Tower security (415-581-8900); Tower manager (415-581-8902); the Department of Public Safety (415-565-4611); and, the Tower’s Chief Engineer (415-581-8901).

Hastings’ On-Campus Housing Fire Statistics

Following are fire statistics for U.C. Hastings’ on-campus housing, the “Tower,” located at 100 McAllister Street:

Fires	2012	2013	2014	Totals
Number	1	0	1	2
Causes	Stove fire due to negligence*	0	Stove fire due to negligence*	--
Injuries	0	0	1	1
Fatalities	0	0	0	0
Combined Damages	\$0	\$0	\$2386.50	\$2386.50

*The 2012 stove fire occurred because a resident fell asleep while cooking a pot of noodles. The fire was minor and was immediately extinguished by the resident with water from the sink.

*The 2014 stove fire occurred because a resident fell asleep while heating oil. The fire was minor and was immediately extinguished by the resident with water and blanket. The victim of the fire was transported to a nearby medical facility and treated for their injuries.

